

# Splendid Venice

VENEZIA



*Where Venetian Splendor,  
Hospitality and Art meet*



[join our newsletter](#)

[find out more](#)

[our promotions](#)

[book now](#)

## lagoon sensations

The Splendid Venice sits right in the heart of the city between St. Mark's Square and the Rialto Bridge. Overlooking romantic bridges and old Venetian Palaces, the Splendid Venice is reachable by gondola and water taxi. Innovative design and subtle colour combinations create unique interiors. The public areas are exquisitely decorated in beige with a hint of wisteria, punctuated with dashes of black and red. Large windows frame an evocative view of the Venetian canals life.

## history

In the Sixteenth Century, the building was an inn known as "Locanda Cappello Nero". In 1900, it changed its name to "Albergo Splendido" and again in 1930 to "Hotel Splendid". The hotel was fully renovated in 2007 and renamed the "Splendid Venice" hotel.

## services

- 165 rooms
- Non-smoking rooms
- Restaurant "Le Maschere"
- Campiello lounge
- Full American buffet breakfast
- Bar
- Media room
- 1 meeting room up to 40 seats
- Library
- Water taxi landing area
- Pay TV
- Starbed
- My Starbeauty
- Pillowmania
- Wi - Fi internet
- Wii Fit Nintendo
- Concierge service
- Safety box in the room
- Golf (45 minutes)



## rooms & suites

The hotel has 165 rooms (16 suites, 6 junior suites, 63 deluxe and 68 superior rooms) that are at once stylish and welcoming. Some rooms and suites have balconies with romantic views of the bell tower of St. Mark's and Venetian rooftops, others overlook the internal campiello or the canals. All rooms are equipped with Starbed (luxury goose down bed).



[join our newsletter](#)
[find out more](#)
[our promotions](#)
[book now](#)

## the campiello

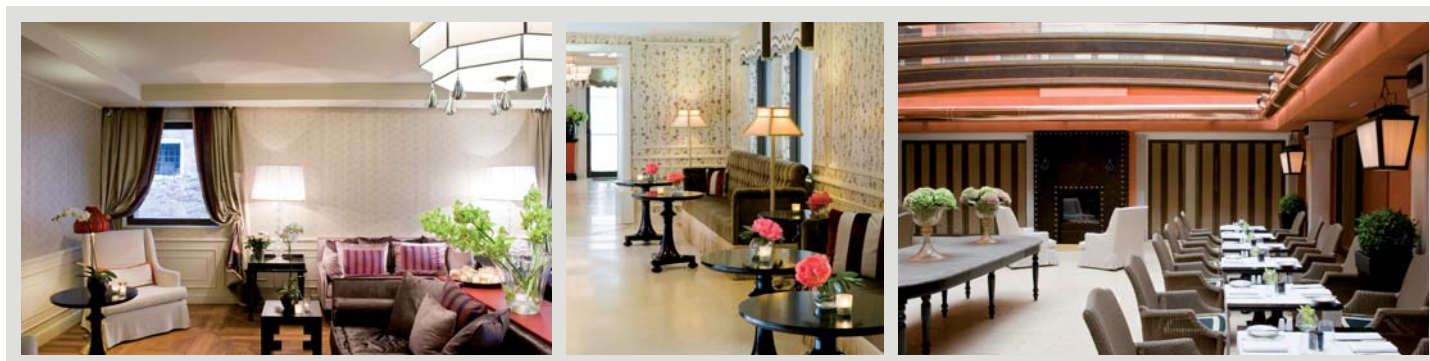
A Campiello is a typical Venetian outdoor courtyard and the focus of local social life. The Splendid Venice's Campiello has a glass rooftop for year round use and is connected to the lobby and all common areas.

## bar & restaurant

With direct access to the Campiello and canals, the bar has a refined, intimate atmosphere with a counter and furniture in black lacquer, bathed in the warmth of eclectic elements in gold and light from a red silk chandelier. Traditional Venetian cuisine and classic dishes can be savoured in "Le Maschere" restaurant (which seats up to 62 people) in a sophisticated ambience overlooking a typical Venetian canal. The wine list is superb and private dinners may be held in the "Sala degli Specchi" (mirrors room).

## relaxation

On the rooftop of the Splendid Venice, a large terrace offers breathtaking panoramic views of the campanile of St. Mark's and the rooftops of Venice. On the terrace, there is a typical Venetian "altana" solarium. On the ground floor, amid stunning perspectives and vistas, the library, media room and music lounge overlook the Venetian canals.



## meetings & incentives

The refined and discreet music room, overlooking the lagoon, can be hired for small, exclusive meetings. On request, prestigious locations are available a few yards from the hotel.

Hotel Code: SY

Sabre/Abacus SY012957

Apollo/Galileo SY5338

Worldspan SY4260

Amadeus/System One SYVCESPL



### from the motorway

A4 Venezia/Milano (8 km).  
Cars must park in Piazzale Roma.

### from the station or piazzale roma

Rialto stop on Vaporetto line 2 or Water taxi to private landing.

### a few steps away

Piazza San Marco, Bridge of Sighs, Rialto Bridge and Canal Grande.